



2.2 | Dimout
Accolade



2.2 | Dimout
Accolade

Product Details

Product code: 6288
 Width: 150cm / 59 inches
 Weight: 280gsm / 8.3 oz sqy +/- 3%
 Colour: 25 Colours
 Composition: 60% Mod Acrylic / 40% Polyester
 Available As: Cut, FWOT
 End Usage: Curtains
 Average Roll Size: 50m / 54.7yds

Performance Features



Light protection

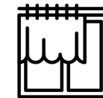


Flame retardant



Dimout

Suggested Applications



Technical Specifications

FR Standards: B1, BS 5867 Part 2 Type B, IMO FTP Code 2010 Part 7
 Colour Fastness to Light: 4-6
 Dimensional Stability to Washing: +/- 3%
 Dimensional Stability to Dry Cleaning: +/- 3%
 Care Instructions: 40°C short cycle wash, do not bleach, do not tumble dry & cool iron 110°C. Dry clean P sensitive.
 Pattern Type: Plain

Care Instructions



Samples and information

Get in touch with our team today for a fabric sample or for further information.

Ordering a sample is simple.

Although every effort is made, no guarantee for exact colour match is given.
For total light exclusion a Blackout lining is required.



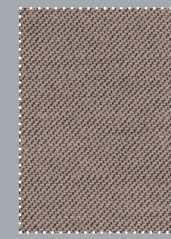
Curtain: ACCOLADE Parsnip, Graphite.
Cushions: ACCOLADE Jaffa, ACCOLADE Graphite

Large sample colour:
Opal 41

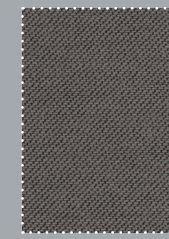
Swatches: ACCOLADE Truffle, Parsnip, Seal,
Cocoa, Jaffa.



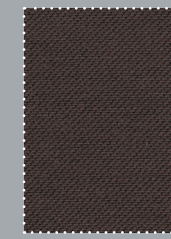
Parsnip 895



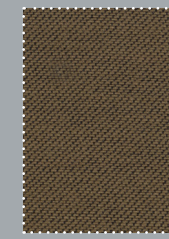
Seal 708



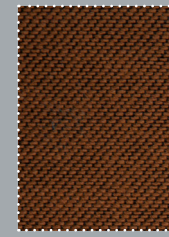
Elephant 88



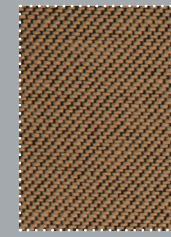
Cocoa 19



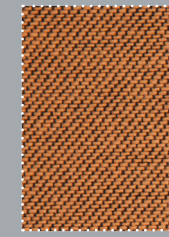
Truffle 865



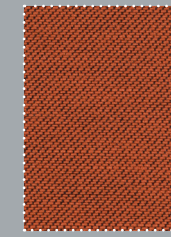
Nutmeg 23



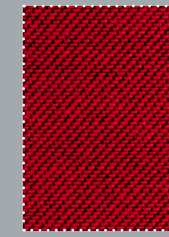
Beige 22



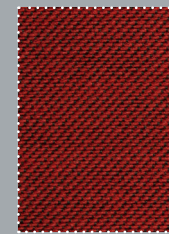
Apricot 24



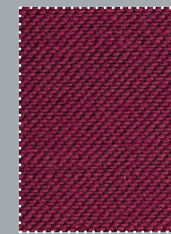
Jaffa 234



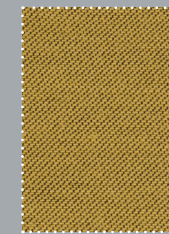
Ruby 31



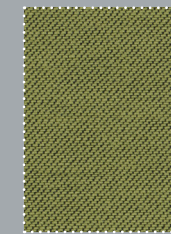
Bilberry 32



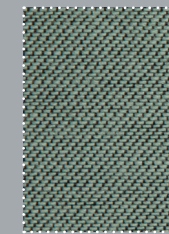
Claret 45



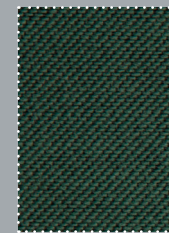
Lime 263



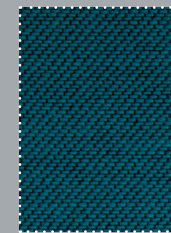
Tarragon 238



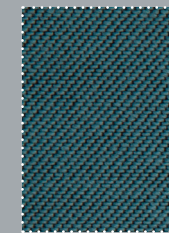
Sea Green 27



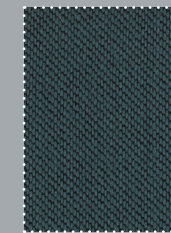
Moss 30



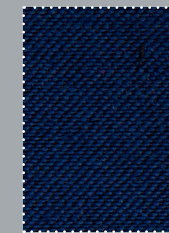
Opal 41



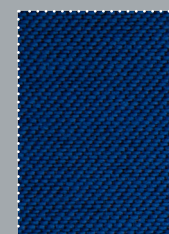
Ice Blue 28



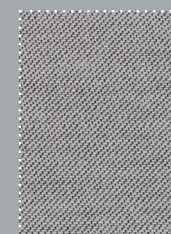
Teal 835



Royal 37



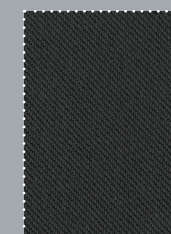
Kingfisher 35



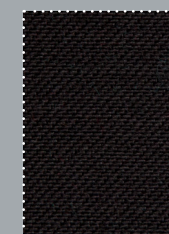
Zinc 710



Slate 29



Graphite 497



Black 36

Product code: 6288
Width: 150cm / 59 inches