

Inherently flame retardant  
print collection



## The Chelsea Collection

---





Inherently flame retardant print collection



# Chelsea Collection

Drawing on the classic design elements of tartan, herringbone, houndstooth and damask, Chelsea is a stylish collection of printed, furnishing fabrics, inspired by the ongoing trend for heritage-style fabrics in contemporary interiors.

From the striking feature design Portobello, a timeless damask, to the warmth of Greenwich, the wool-look tartan, the collection reflects the rich history of traditional textiles in a smart, modern mix of contrasting scale and texture.

Offered in a range of seven co-ordinating colourways and on an extensive range of FR base fabrics, Chelsea is complimented perfectly by the beautiful textural qualities of the woven upholstery fabric Eureka and the plain contrasting drapery fabric Manhattan.

CHELSEA Indigo



**MAIN IMAGE** Headboard EUREKA Graphite **Curtain** KNIGHTSBRIDGE Pewter **Blind** KENSINGTON Pewter **Scatters** GREENWICH Mustard **MANHATTAN** Mercury **Duvet** SHAFTSBURY Pewter **STOCKWELL** Mustard (reverse) **Pillowcases** STOCKWELL Mustard **SHAFTSBURY** Pewter **Scatters** CAMDEN Pewter **Chair** EUREKA Charcoal & Graphite





**STONE**



**COPPER**



**MAIN IMAGE** Curtain PORTOBELLO Copper **Sheer** HARMONY Linen **Chairs** EUREKA Chalk **Scatters** KENSINGTON Topaz MANHATTAN Coral GREENWICH Copper STOCKWELL Topaz **Headboard** METRO Henna **Scatters** CAMDEN Topaz SHAFTSBURY Copper **Bed Runner** KNIGHTSBRIDGE Topaz STOCKWELL Topaz (reverse)

**MAIN IMAGE** Curtain KNIGHTSBRIDGE Mist **Sheer** SLEEK White **Lampshade** SHAFTSBURY Stone **Chairs** EUREKA Chalk **Scatters** GREENWICH Stone MANHATTAN Peppercorn KENSINGTON Mist



# CLARET



**MAIN IMAGE** Blind GREENWICH Claret **Lampshade** SHAFTSBURY Pumice **Booth Seating** METRO Henna **Chairs** EUREKA Bark EUREKA Cranberry **Scatters** STOCKWELL Claret KNIGHTSBRIDGE Pumice KENSINGTON Pumice GREENWICH Claret PORTOBELLO Claret CAMDEN Charcoal MANHATTAN Peppercorn

# COCOA



**MAIN IMAGE** Headboard EUREKA Graphite **Duvet** SHAFTSBURY Pebble CAMDEN Pebble (reverse) **Pillowcases** CAMDEN Pebble SHAFTSBURY Pebble **Scatters** KNIGHTSBRIDGE Ebony STOCKWELL Cocoa **Bed Runner** KNIGHTSBRIDGE Ebony STOCKWELL Cocoa (reverse)





**INDIGO**

**HEATHER**



**MAIN IMAGE** Curtain PORTOBELLO Indigo **Sheer** SLEEK White **Lampshade** KNIGHTSBRIDGE Ochre **Scatters** CAMDEN Indigo STOCKWELL Indigo KNIGHTSBRIDGE Ochre SHAFTSBURY Chambray

**MAIN IMAGE** Curtain SHAFTSBURY Fern **Sheer** SERENITY Tusk **Lampshade** GREENWICH Heather **Scatters** PORTOBELLO Heather KENSINGTON Fern



# CHELSEA COLLECTION

# TECHNICAL SPECIFICATION

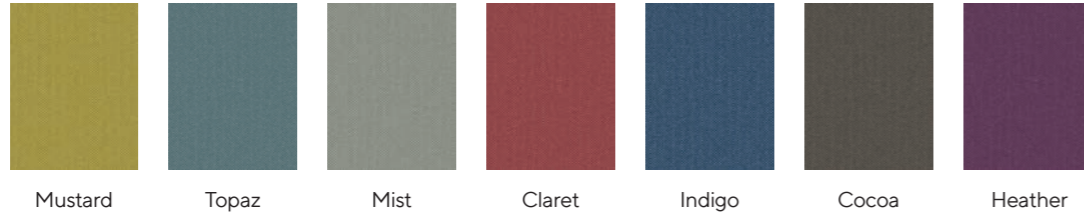
## PORTOBELLO

Pattern repeat:  
H46.6cm x V46.6cm



## STOCKWELL

Pattern repeat:  
H17.5cm x V17.5cm



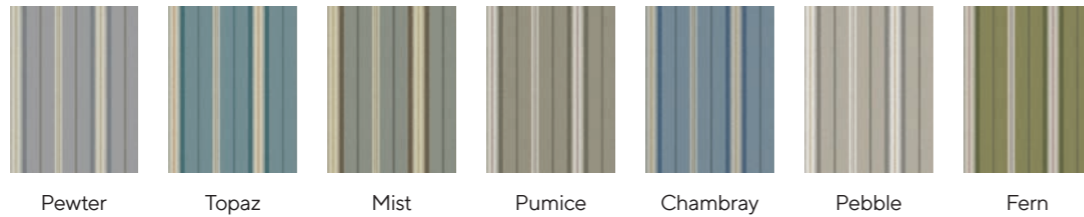
## GREENWICH

Pattern repeat:  
H35cm x V35cm



## KENSINGTON

Pattern repeat:  
H35cm x V35cm



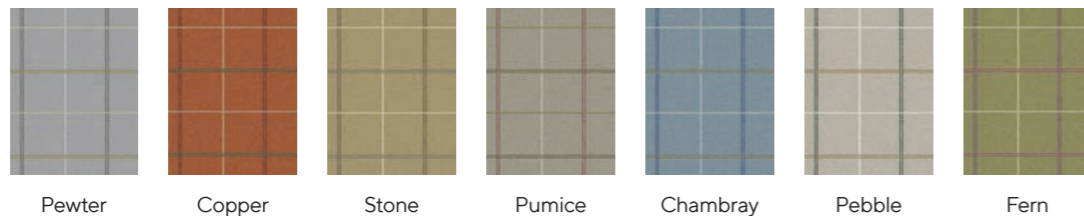
## KNIGHTSBRIDGE

Pattern repeat:  
H17.5cm x V35cm  
half drop



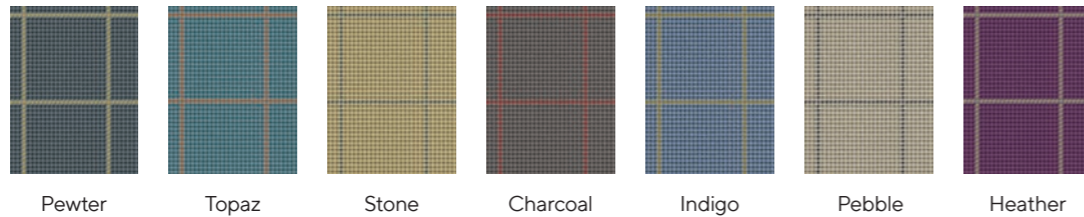
## SHAFTSBURY

Pattern repeat:  
H35cm x V35cm



## CAMDEN

Pattern repeat:  
H17.5cm x V17.5cm



Product code	Product information	Suggested end use	Flame retardant specification	Care instructions
6910	Inherently Flame Retardant Panama 100% Polyester 150cm / 59 inches 240gsm / 7.1 oz sqy +/- 5%	Curtaining	B1, BS 5867 Part 2 B & C, IMO FTP Code 2010 Part 7	 Washable at 71°C for thermal disinfection
6999	Inherently Flame Retardant Mezzo Brushed Panama 100% Polyester 150cm / 59 inches 220gsm / 6.5 oz sqy +/- 5%	Curtaining	B1, BS 5867 Part 2 B & C, IMO FTP Code 2010 Part 7	 Washable at 71°C for thermal disinfection
6913	Inherently Flame Retardant Satin Weave 100% Polyester 142cm / 56 inches 230gsm / 6.8 oz sqy +/- 5%	Curtaining, Bedding, Cushions	M1, B1, BS 5867 Part 2 B & C, EN 13773, BS 7175 Source 0, 5 & 7, IMO FTP Code 2010 Part 7 & 9	 Washable at 71°C for thermal disinfection
6994	Inherently Flame Retardant Nimbus 100% Trevira CS Polyester 140cm / 55 inches 230gsm / 6.8 oz sqy +/- 5%	Curtaining, Bedding, Cushions	B1, BS 5867 Part 2 B & C, IMO FTP Code 2010 Part 7, BS 5815 Part 3	 Washable at 71°C for thermal disinfection
6934	Inherently Flame Retardant Quatro 100% Polyester 142cm / 56 inches 230gsm / 6.8 oz sqy +/- 5%	Curtaining, Bedding, Cushions	M1, B1, BS 5867 Part 2 B & C, BS 7175 Source 0, 5 & 7, IMO FTP Code 2010 Part 7 & 9	 Washable at 71°C for thermal disinfection
6900	Inherently Flame Retardant Plain Weave 100% Polyester 141cm / 56 inches 145gsm / 4.3 oz sqy +/- 5%	Curtaining, Bedding	M1, BS 5867 Part 2 B & C, BS 5815 Part 3, BS 7175 Source 0, 5 & 7, IMO FTP Code 2010 part 7	 Washable at 71°C for thermal disinfection
6975 & 6974	Inherently Flame Retardant Enigma Dimout 100% Polyester 146-148cm / 57-58 inches (6975) or 292cm / 115 inches (6974) 298gsm / 8.8 oz sqy +/- 5%	Curtaining (Dimout)	M1, B1, EN 13773, BS 5867 Part 2 B & C, IMO FTP Code 2010 part 7, NFPA 701 1+2, Classe Uno	 Washable at 71°C for thermal disinfection
6904	Inherently Flame Retardant Venus Dimout 100% Polyester 150cm / 59 inches 250gsm / 7.4 oz sqy +/- 5%	Curtaining (Dimout)	M1, B1, BS 5867 Part 2 B & C, BS 7175 Source 7, NFPA 701 1 + 2, CA19, IMO FTP Code 2010 Part 7, Classe Uno	 Washable at 71°C for thermal disinfection
6755 & 6750	Flame Retardant Discovery Blackout 100% Polyester / Acrylic back coating 145cm / 57 inches (6755) or 290cm / 114 inches (6750) 410gsm / 12.1 oz sqy +/- 5%	Curtaining (Blackout)	B1, BS 5867 Part 2 B, EN 13773, IMO Module B, IMO FTP Code 2010 Part 7, NFPA 701 1+2, CA19, Classe Uno	 Iron on non-coated side
6911 & 6952	Inherently Flame Retardant Blackout 100% Polyester / Acrylic back coating 142cm / 56 inches (6911) or 280cm / 110 inches (6952) 240gsm / 7.1 oz sqy +/- 10%	Curtaining (Blackout)	BS 5867 Part 2 B, IMO FTP Code 2010 Part 7, NFPA 701 1 + 2, Classe Uno	 Iron on non-coated side
6957 & 6958	Flame Retardant Outblack Silk Blackout 100% Polyester / Acrylic back coating 142cm / 56 inches (6957) or 284cm / 112 inches (6958) 285gsm / 8.4 oz sqy +/- 5%	Curtaining (Blackout)	B1, BS 5867 Part 2 B, IMO FTP Code 2010 Part 7, EN 13773, NFPA 701 1 + 2	 Iron on non-coated side
6896	Inherently Flame Retardant Blackout 100% Polyester / Acrylic back coating 140cm / 55 inches 300gsm / 8.8 oz sqy +/- 5%	Curtaining (Blackout)	M1, B1, BS 5867 Part 2 B, IMO FTP Code 2010 Part 7	 Iron on non-coated side
6996 & 6998	Inherently Flame Retardant Libra Blackout 100% Polyester / Acrylic back coating 145cm / 57 inches (6996) or 280cm / 110 inches (6998) 360gsm / 10.6 oz sqy +/- 5%	Curtaining (Blackout)	BS 5867 Part 2 Type B, IMO FTP Code 2010 Part 7	 Iron on non-coated side
9017	Inherently Flame Retardant Illusion Sheer 100% Polyester 300cm / 118 inches 70gsm / 2.1 oz sqy	Curtaining (Sheer)	M1, EN 13773, BS 5867 Part 2 C, IMO FTP Code 2010 Part 7, Classe Uno	 Iron on non-coated side
9049 & 9000	Flame Retardant Sheer 100% Polyester 150cm / 59 inches (9049) or 300cm / 118 inches (9000) 50gsm / 1.5 oz sqy +/- 3%	Curtaining (Sheer)	M1, BS 5867 Part 2 C, IMO FTP Code 2010 Part 7	 Iron on non-coated side
6978	Flame Retardant Sentinel MRSA 100% Polyester / Acrylic back coating 137cm / 54 inches 350gsm / 10.3 oz sqy +/- 5%	Waterproof Upholstery >100,000 Martindale	BS 5852 Crib 5, IMO FTP Code 2010 Part 8	Routine soap and warm water sponging is effective for ordinary soiling. Fresh stains, both water and oil based are easily removed using most water based household cleaning agents. Antiseptic cleaning agents can be used and more stubborn stains may be required a safe solvent such as Isopropyl Alcohol or mineral spirit. A half cup of household bleach for 5 litres of water can also be used as a useful disinfectant. Best cleaning is wipe & dry technique. Full immersion is not recommended. Not dry cleanable. Excellent stain removal has been observed for: Blood, Urine, Grease, Ink, Coffee, Grape Juice, Loline, Betadine, Ketchup, Mustard, Salad dressing and suntan lotion. Do not dry clean
6914	Flame Retardant Enduracare MRSA 100% Polyester impregnated and multi-coated microporous polymers 140cm / 55 inches 350gsm / 10.3 oz sqy +/- 5%	Waterproof Upholstery >50,000 Martindale	BS 5852 Crib 5, IMO FTP Code 2010 Part 8	Will not support microbial growth including: Aspergillus Niger, E. Coli, Altinata, Salmonella, Penicillium, MRSA, Cladosporium Herbarism. AATCC test 147 - 1998

For use as a guide only. Whilst the colours in this brochure have been reproduced as accurately as possible, we are restricted by the limitations of 4 colour litho printing and there may be slight differences when printed on fabric.

Soapless detergent to be used on all of the above base cloths. No fabric conditioners/softeners or freshener sprays to be used as this can adversely affect FR properties. A tolerance of +/- 3% should be allowed for on pattern repeats as it can vary from quality to quality. Shade variations may occur batch to batch but we will endeavour to maintain good colour continuity. Please inspect all goods before cutting as no claims can be accepted or exchanges made once the material has been cut.



